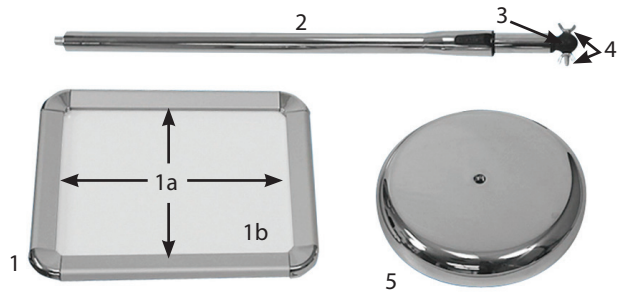


Pedestal Snap Frame

Product Parts

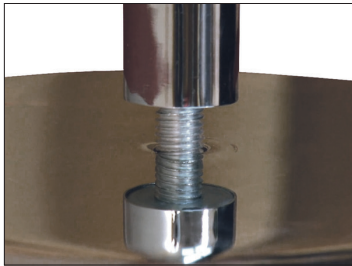
- 1 - Frame
- 1a - Snap Edges
- 1b - Protective Film
- 2 - Pole
- 3 - Ball Joint
- 4 - Wing Screw & Nut
- 5 - Base



Display Set-Up

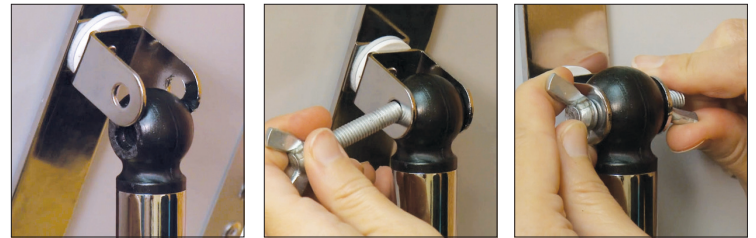
Step 1

Remove all parts from box and place on a clean surface. Screw the threaded end of the Pole (2) into the threaded receptacle in the center of the Base (5).



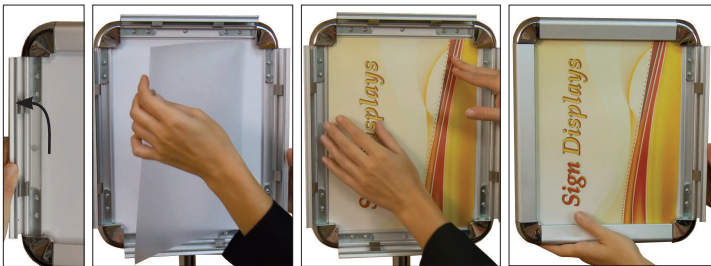
Step 2

Align the bracket on the back of the Frame (1) to the holes on the Ball Joint (3). Insert the Winged Screw (4) through the bracket and the Ball Joint (3). Secure into place with the Wing Nut (4).



Step 3

Open the Snap Edges (1a). Remove the Protective Film (1b) and place it over your graphic. Place your graphic with the Protective Film (1b) on top, into the Frame (1). Close the Snap Edges (1a).



Step 4

Press the black button on the Pole (2) downward to extend the telescoping pole to your desired height. Rotate the Frame (1) in either direction to display horizontally or vertically.



Storage

Store in a cool dry location.

Care

To clean, wipe with damp cloth.